



## APPENDIX C - KEY PERFORMANCE INDICATORS

**NATIONAL CHESS FEDERATION (NCF): Saint Lucia Chess Federation**

**CONTINENT: Americas**

**DEVELOPMENT LEVEL: 5**

**PERIOD: 2022**

**KEY PERFORMANCE INDICATORS (KPIs)**<sup>1</sup> are the critical (key) indicators of progress toward an intended result.

The NCF is required to measure the effectiveness of its programmes using the KPIs listed below. At the beginning of the period, the NCF is expected to complete both the **Baseline** and **End of Period-target** values. It is possible that a Federation may not be able to report on a particular KPI and this will be taken into consideration at the end of the reporting period. NCFs can also make use of the '**Comments**' field as required. The NCF is also allowed to include any additional KPIs that it considers to be relevant for reporting purposes. When the NCF is preparing its final report for the end of the reporting period, the **Actual** values of the KPIs need to be completed for each KPI identified.

### KPI STRUCTURE

The KPIs' shall be divided into 4 main categories as follows:

**Core:** These KPIs are related to the technical operations of the federation. It includes number of active players, number of tournaments, average player ratings as well as supporting 'infrastructure' e.g. number of arbiters, trainers ETC. Most of this information can be sourced from by FIDE via its website or from the Elista office. This KPI allows FIDE to ascertain the quality/quantity of the players, technical officials events, etc...

**Social/Special:** These examine the engagement in additional programmes related to the work of other FIDE Commissions and their priorities. These include: females, kids/chess in education, vulnerable groups (refugees, people with special needs, chess in prisons etc.). Federations are encouraged to engage in at least one such programme. This KPI allows federations to fulfil the horizontal goals of FIDE as chess impacts several aspects of society.

**Promotion:** This includes the focus on the dissemination and profiling of chess activities of the federation and FIDE support. This should include mainstream and social media. It is important that chess activities are highlighted so persons within the wider communities understand the value of chess and the role of FIDE which can increase the opportunities for support.

**Partnerships:** This includes sponsors, strategic partners whose objectives are aligned to the federation. Strategic partners can include other government agencies, NGOS, media outlets. This KPI tracks the efforts of federations to engage other partners in the support of their mandate so as to build increased sustainability.

Of course, Federations can also include any other KPIs they see as relevant to their operations. The KPIs are listed in the table below.

---

<sup>1</sup> <https://kpi.org/KPI-Basics>



## APPENDIX C - KEY PERFORMANCE INDICATORS

Key Performance Indicators (KPIs)	Baseline-2021 <sup>2</sup>	End of Period Target	End of Period Actual	Comments
<b>CORE</b>				
Active FIDE-rated players	2	5	2	
<ul style="list-style-type: none"> <li>Female</li> <li>All</li> </ul>	11	25	15	
Active players on FIDE List	3	5	3	
<ul style="list-style-type: none"> <li>Female</li> <li>All</li> </ul>	11	30	15	
Certified Arbiters-Active	1	2	2	
<ul style="list-style-type: none"> <li>Female</li> <li>All</li> </ul>	4	6	6	
Certified Trainers-Active	0	2	0	
<ul style="list-style-type: none"> <li>Female</li> <li>All</li> </ul>	3	6	3	
Average rating of top 10 players	1770	1800	1689	
<ul style="list-style-type: none"> <li>Female</li> <li>All</li> </ul>				
FIDE-rated tournaments organised	0	4	0	
<ul style="list-style-type: none"> <li>Classic</li> <li>Hybrid</li> <li>Blitz</li> <li>Rapid</li> </ul>	0 0 0 2	4 4 6 6	1 0 2	
Other tournaments-Participation	2	4	4	
<ul style="list-style-type: none"> <li>Online/Hybrid events</li> <li>Local events</li> <li>International chess tournaments</li> </ul>	1 1	1 1	1 4	
Affiliated clubs	0	1	0	

<sup>2</sup> NCF to populate these fields with the current values of each KPI as at the beginning of the programme/project period.



## APPENDIX C - KEY PERFORMANCE INDICATORS

SOCIAL/SPECIAL				
Programmes (Females, Education, Prisons, refugees etc...)		Teachers Training and Schools Chess Competition	Chess Education Seminar Chess in Prisons program Chess in Schools Program	
Participants in each programme	unclear	100	124	
PROMOTION				
Positive or neutral coverage in: <ul style="list-style-type: none"> <li>Mainstream media</li> <li>Social Media/Websites</li> <li>Other</li> </ul>	Facebook	Website Facebook Instagram TV, Radio Interviews Newspaper	Website Facebook Instagram TV, Radio Interviews Newspaper	
PARTNERSHIPS				
Chess sponsors	3	5	National Lotteries LUCLEC	
Other Strategic Partners e.g. NOC, Media, government organisations, NGOs	1	2	Ministry of Sports and Youth Development	
OTHER				
Please feel free to specify any other KPI that may be important to the operations of the federation				

On behalf of FEDERATION

Tris-Ann Richards

President



Saint Lucia Chess  
Federation

Date: June 11, 2021

## **APPENDIX C - KEY PERFORMANCE INDICATORS**



## APPENDIX D – REPORT ON FUNDING

**NATIONAL CHESS FEDERATION (NCF):**

**CONTINENT:**

**DEVELOPMENT LEVEL:**

**Please complete ALL requested fields in this report.**

**1. Programme/Project Name:**

St. Lucia Chess Players Advancement Program

**2. Programme/Project Dates:**

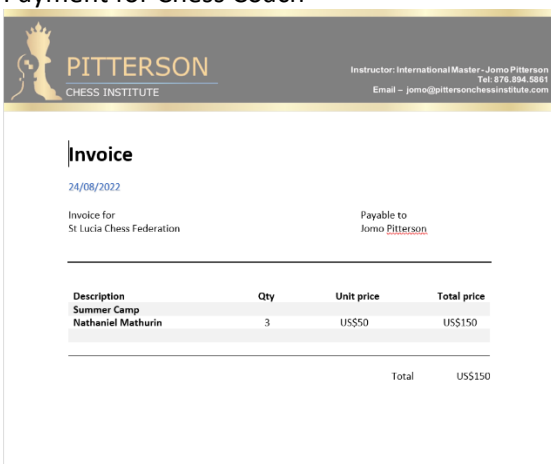
July 2022

**3. Summary of Project Outcomes:**

Three new rated players  
One player with Conditional CM and FM  
Participated in first ever Chess Olympiad

**4. Breakdown of Funding Usage (Please provide supporting documents as far as possible):**

Payment for Chess Coach



Assisted with travel expenses to the Chess Olympiad



## APPENDIX D – REPORT ON FUNDING

<b>DELHI INDIRA GANDHI INTL</b>	<b>PARIS CHARLES DE GAULLE</b>	<b>AI143</b>	<b>12:50</b>	<b>18:30</b>
Terminal: 3	Terminal: 2C		10Aug2022	10Aug2022
Class: SVALECINEU.W	Operated by: AIR INDIA			
Marketed by: AIR INDIA				
Booking status (1): OK				
NVB (2): 10Aug2022				
NVA (3): 10Aug2022				
Flight duration: 09:10				
(1) OK = Confirmed (2) NVB = Not valid before (3) NVA = Not valid after				
<b>PAYMENT DETAILS</b>		<b>FARE DETAILS</b>		
Fare Calculation: PAR AI X/DEL AI MAA444.14AI X/DEL AI		Base Fare:		
PAR272.90NUC717.04END ROE0.934387		EUR 670.00		
Form of payment: CC VI XXXXXXXXXXXXX5051		Taxes:		
XXXX 969344		EUR 8.50FR		
Endorsements: NON-END VLD ON AI FLT ONLY		EUR 11.70FR		
		EUR 4.51IZ		
		EUR 3.00O4		
		EUR 30.14QX		
		EUR 4.41IN		
		Carrier Imposed Fees:		
		EUR 13.91P2		
		EUR 294.00YQ		
		EUR 5.00YR		
		EUR 1.74YR		
Total Amount:		EUR 1046.91		

The above sum was paid for the 5 players on the Olympiad team for the Paris to India leg of travels

### 5. Any funds not yet used? No, all fund were used

If Yes, please provide reasons and details on how and when the funds will be utilised:

### 6. Lessons Learned/Future Improvements:

Plan project several months in advance

On behalf of FEDERATION

President <Federation>

Date: 13/01/2022